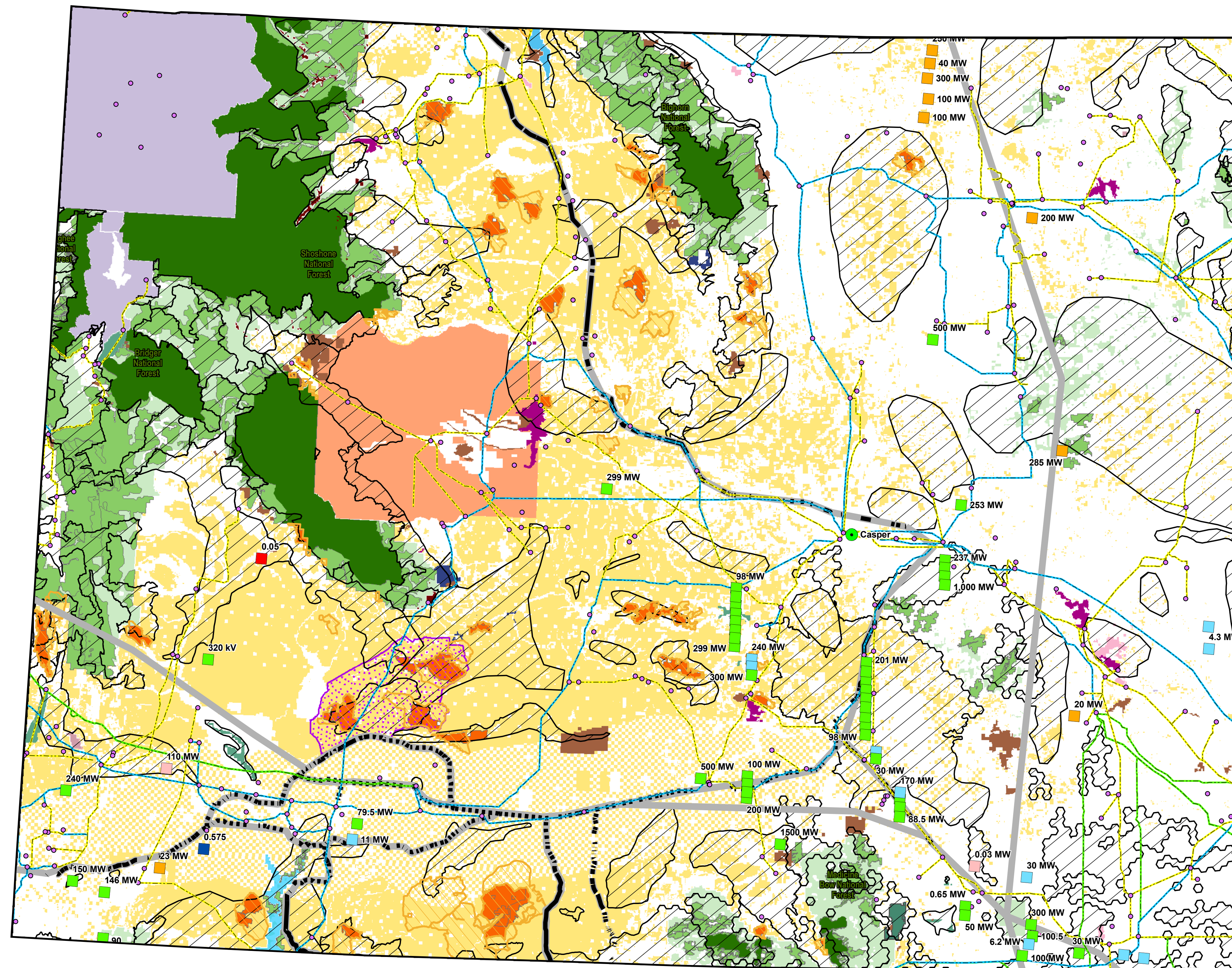


Comprehensive Regional Transmission Planning Data Wyoming (Map 2)



Map Legend

Existing Transmission Network (Not to Scale)

- Substation*
- $\leq 115\text{ kV}^*$
- 115 - 230 kV*
- 230 - 345 kV*
- 345 - 500 kV*
- Potential Energy Corridors on Federal Lands†
- Likely Continuation of Energy Corridors on all Lands‡

Grid Interconnection Requests (Queues) by Generation Type† MW Specified Unless Unknown

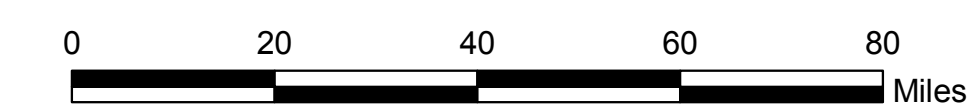
- Wind
- Solar
- Hydro
- Coal
- Gas
- Unknown

Land Use Designations

- Bureau of Land Management (BLM)
- BLM (Areas of Critical Environmental Concern)†
- BLM (Wilderness Study Areas)
- US Forest Service (USFS)
- USFS Inventoried Roadless Areas
- USFS (Wilderness)
- National Park Service (NPS)
- US Fish and Wildlife Service (USFWS)
- National Monument
- State Park
- National Recreation Area
- National Wildlife Refuge
- Bureau of Indian Affairs
- Department of Defense


Proposed Wilderness and Other Sensitive Landscapes

- Citizen's Wilderness Proposal ‡
- TNC Conservation Areas†
- TNC Preserve†
- Jack Morrow Hills Boundary ‡
- Wildlife Habitat Management Area†




Sources

- * Global Energy Decisions, LLC (2007).
- † Public Service Co of Colorado, WAPA, PacifiCorp, Basin Electric, Bonneville Power Administration, Tristate, Northwestern Energy (January 2008).
- ‡ Southern Rockies Conservation Alliance (2008).
- † The Nature Conservancy in Arizona (2007).
- † Wyoming Gap Analysis (1996).
- † Wyoming Geographic Information Science Center (2008).
- † Departments of Energy and Interior (Bureau of Land Management) (2007).
- † Departments of Energy and Interior, Draft West-Wide Energy Corridors PEIS, Figure 2.2-5 at page 2-19 (2007).



Western Resource Advocates



Date: 06/03/08