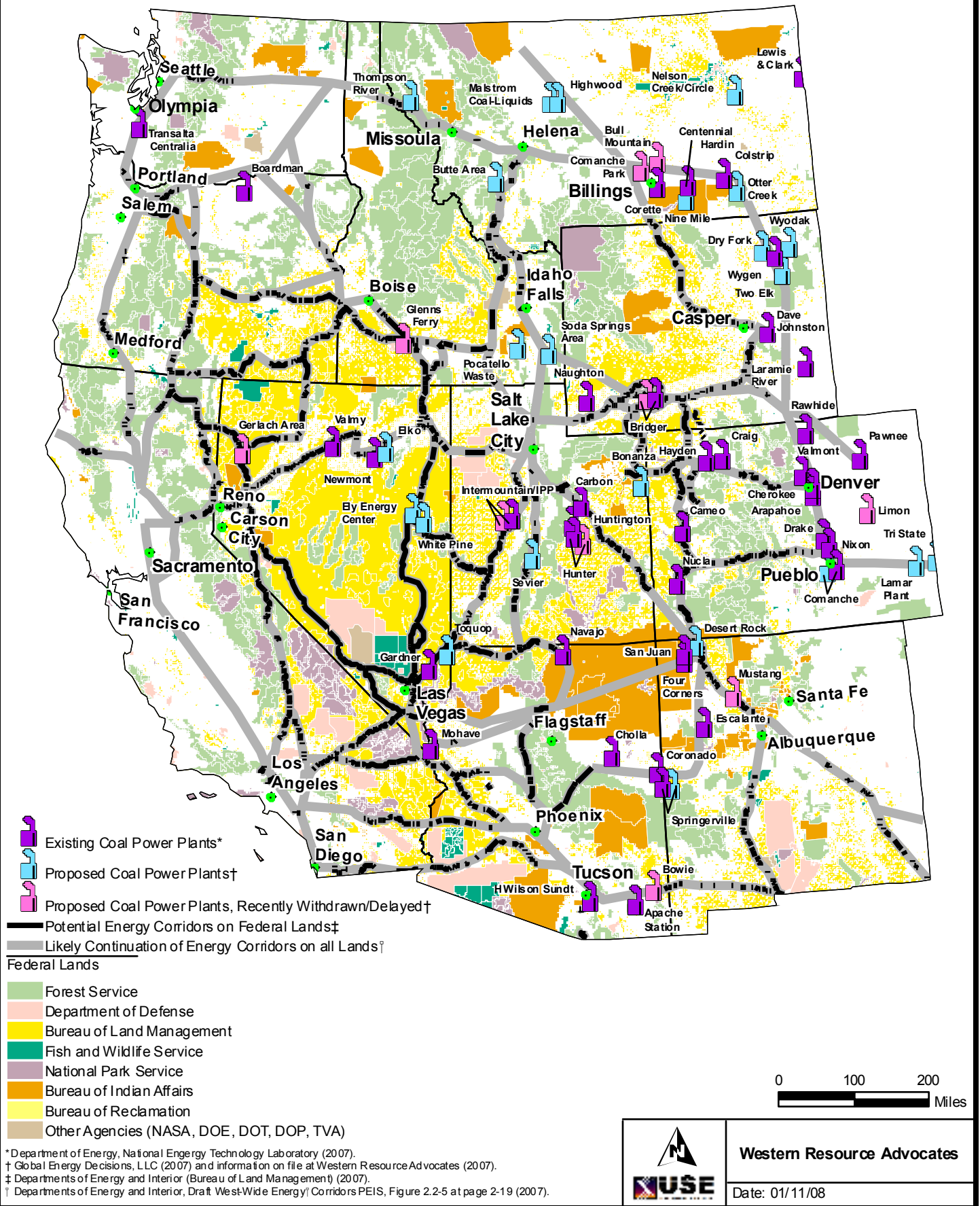


Proposed Section 368 Energy Transmission Corridors and Existing/Proposed Coal Plants in the Western United States



* Department of Energy, National Energy Technology Laboratory (2007).
 † Global Energy Decisions, LLC (2007) and information on file at Western Resource Advocates (2007).
 ‡ Departments of Energy and Interior (Bureau of Land Management) (2007).
 † Departments of Energy and Interior, Draft WestWide Energy Corridors PEIS, Figure 2.2-5 at page 2-19 (2007).