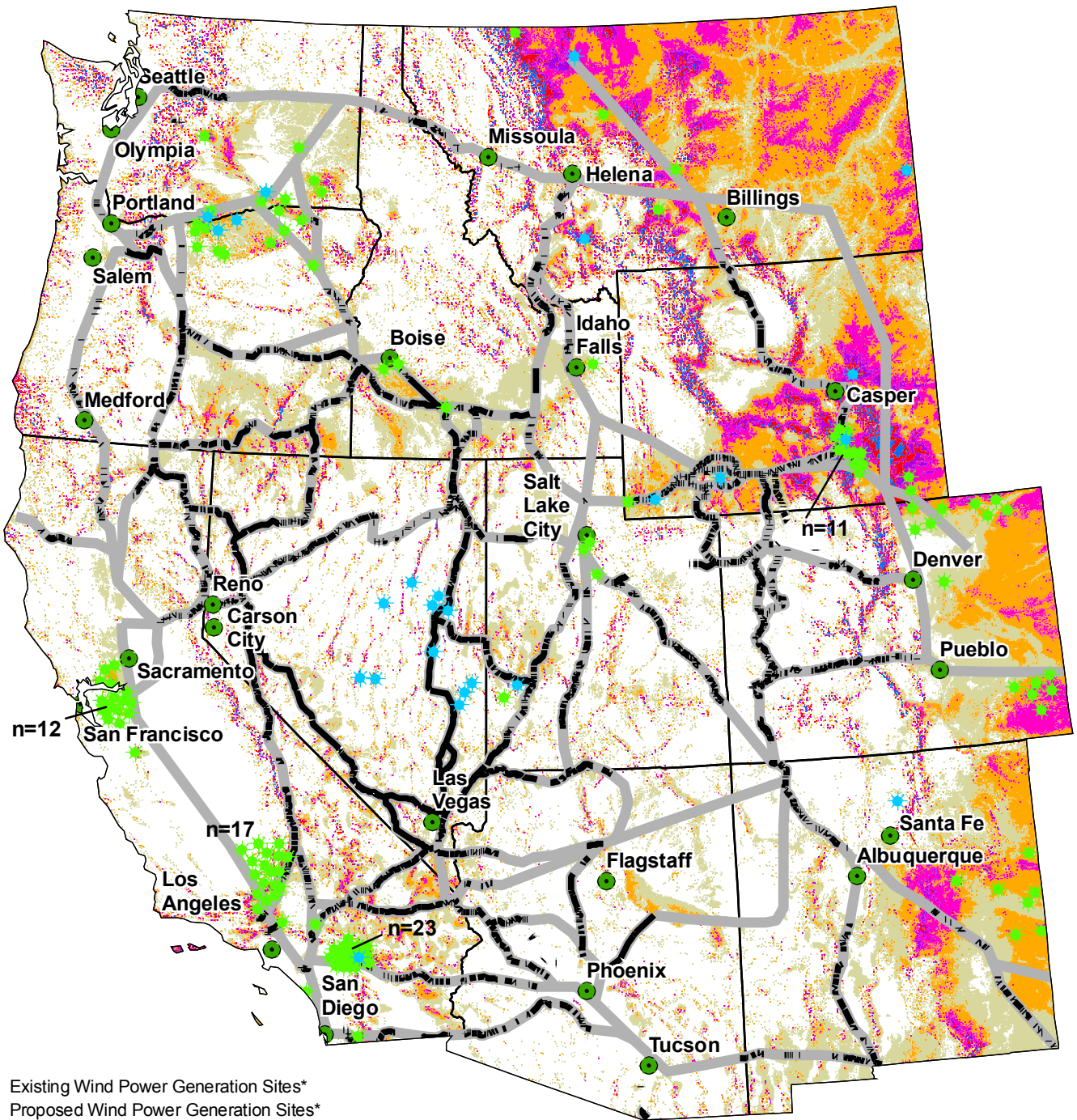
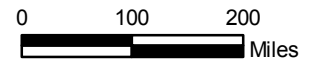


# Proposed Section 368 Energy Transmission Corridors and Wind Power Resources in the Western United States



- ★ Existing Wind Power Generation Sites\*
  - ★ Proposed Wind Power Generation Sites\*
  - Potential Energy Corridors on Federal Lands†
  - Likely Continuation of Energy Corridors on all Lands‡
- Wind Power Classification** †
- |   |               |
|---|---------------|
| <span style="display: inline-block; width: 15px; height: 10px; background-color: white; border: 1px solid black;"></span>   | 1 Poor        |
| <span style="display: inline-block; width: 15px; height: 10px; background-color: #d3d3d3; border: 1px solid black;"></span> | 2 Marginal    |
| <span style="display: inline-block; width: 15px; height: 10px; background-color: #ffa500; border: 1px solid black;"></span> | 3 Fair        |
| <span style="display: inline-block; width: 15px; height: 10px; background-color: #ff00ff; border: 1px solid black;"></span> | 4 Good        |
| <span style="display: inline-block; width: 15px; height: 10px; background-color: #00ff00; border: 1px solid black;"></span> | 5 Excellent   |
| <span style="display: inline-block; width: 15px; height: 10px; background-color: #ff0000; border: 1px solid black;"></span> | 6 Outstanding |
| <span style="display: inline-block; width: 15px; height: 10px; background-color: #0000ff; border: 1px solid black;"></span> | 7 Superb      |



\* Data compiled from <http://www.awea.org/projects/> (2008) and information on file at Western Resource Advocates.  
 † Departments of Energy and Interior (Bureau of Land Management) (2007).  
 ‡ Departments of Energy and Interior, Draft West-Wide Energy Corridors PEIS, Figure 2.2-5 at page 2-19 (2007).  
 † The Department of Energy, National Renewable Energy Laboratory (2003).



Western Resource Advocates

Date: 02/04/08