

Wyoming Oil Shale Resources and Proposed Leasing

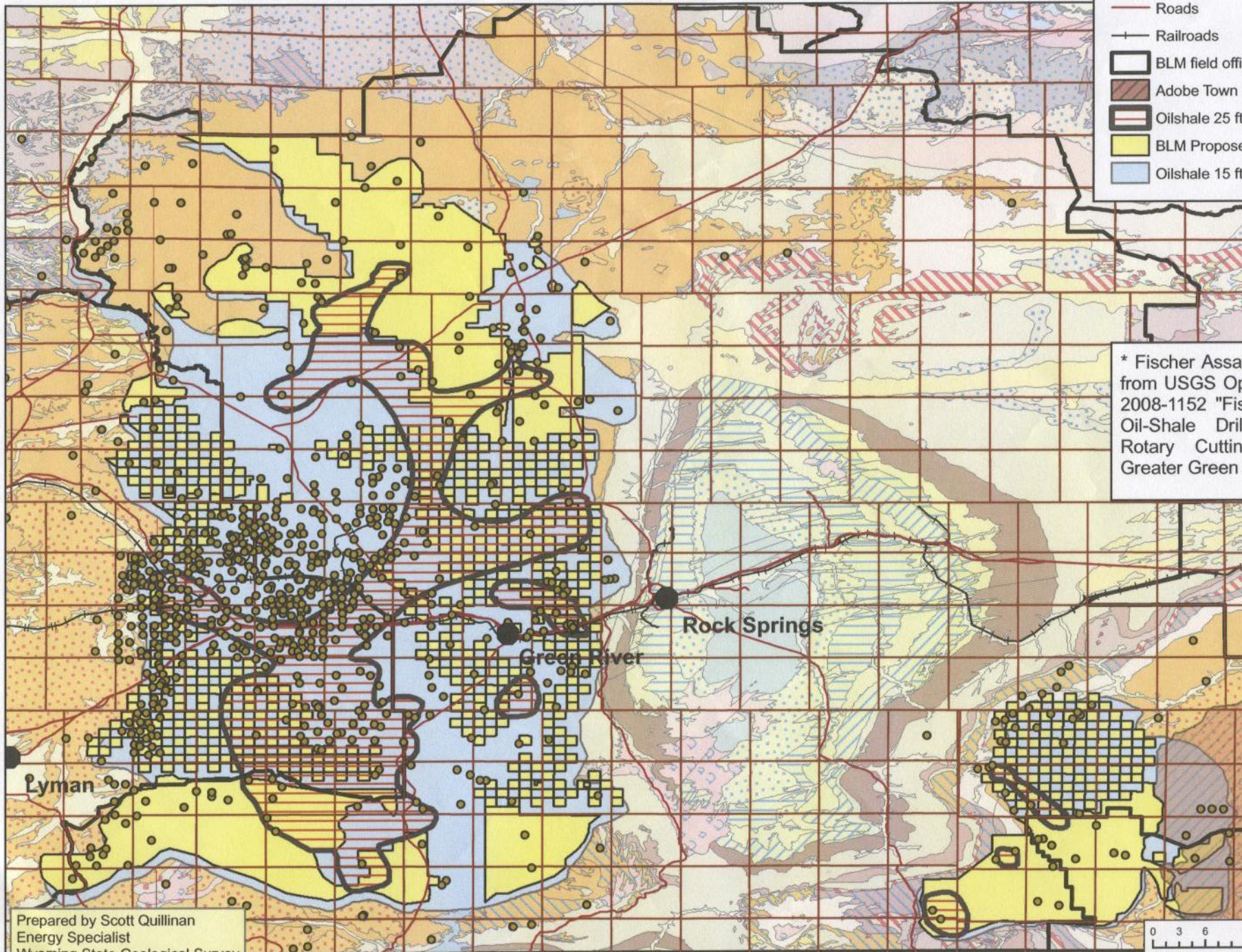
Based on USGS Fisher Assay data

Explanation

- USGS Fisher Assay Locations
- Roads
- Railroads
- BLM field office
- ▨ Adobe Town
- ▨ Oilshale 25 ft. & 25 gal/ton
- BLM Proposed Leasing
- Oilshale 15 ft. & 15 gal/ton

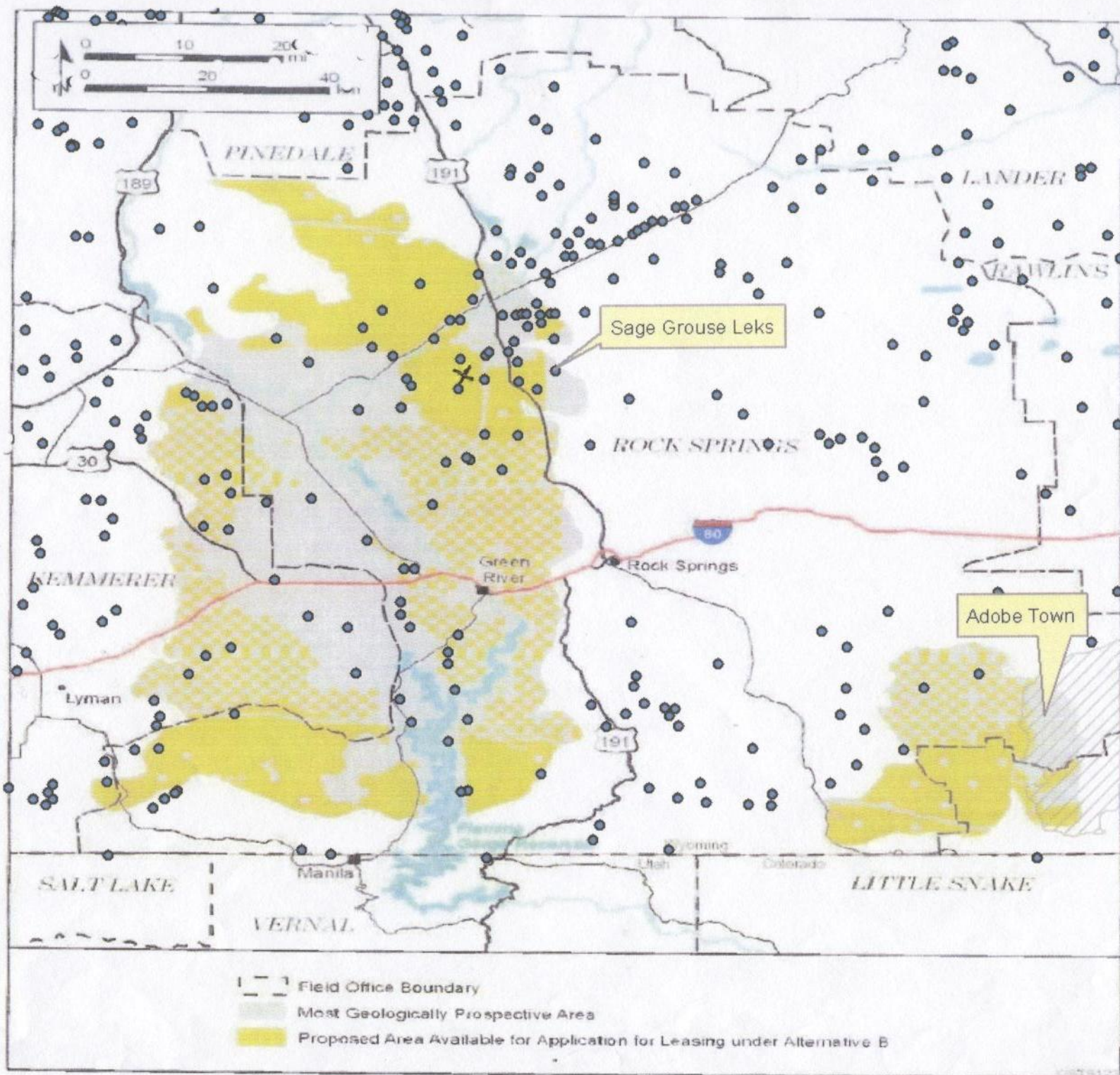





* Fisher Assay Data derived from USGS Open-File Report 2008-1152 "Fisher Assays of Oil-Shale Drill Cores and Rotary Cuttings from the Greater Green River Basin"



Prepared by Scott Quillinan
Energy Specialist
Wyoming State Geological Survey
October 16, 2008

0 3 6 12 Miles



-  Field Office Boundary
-  Most Geologically Prospective Area
-  Proposed Area Available for Application for Leasing under Alternative B