

Central Piceance Basin Oil Shale Leases and Potential With Oil and Gas Leases

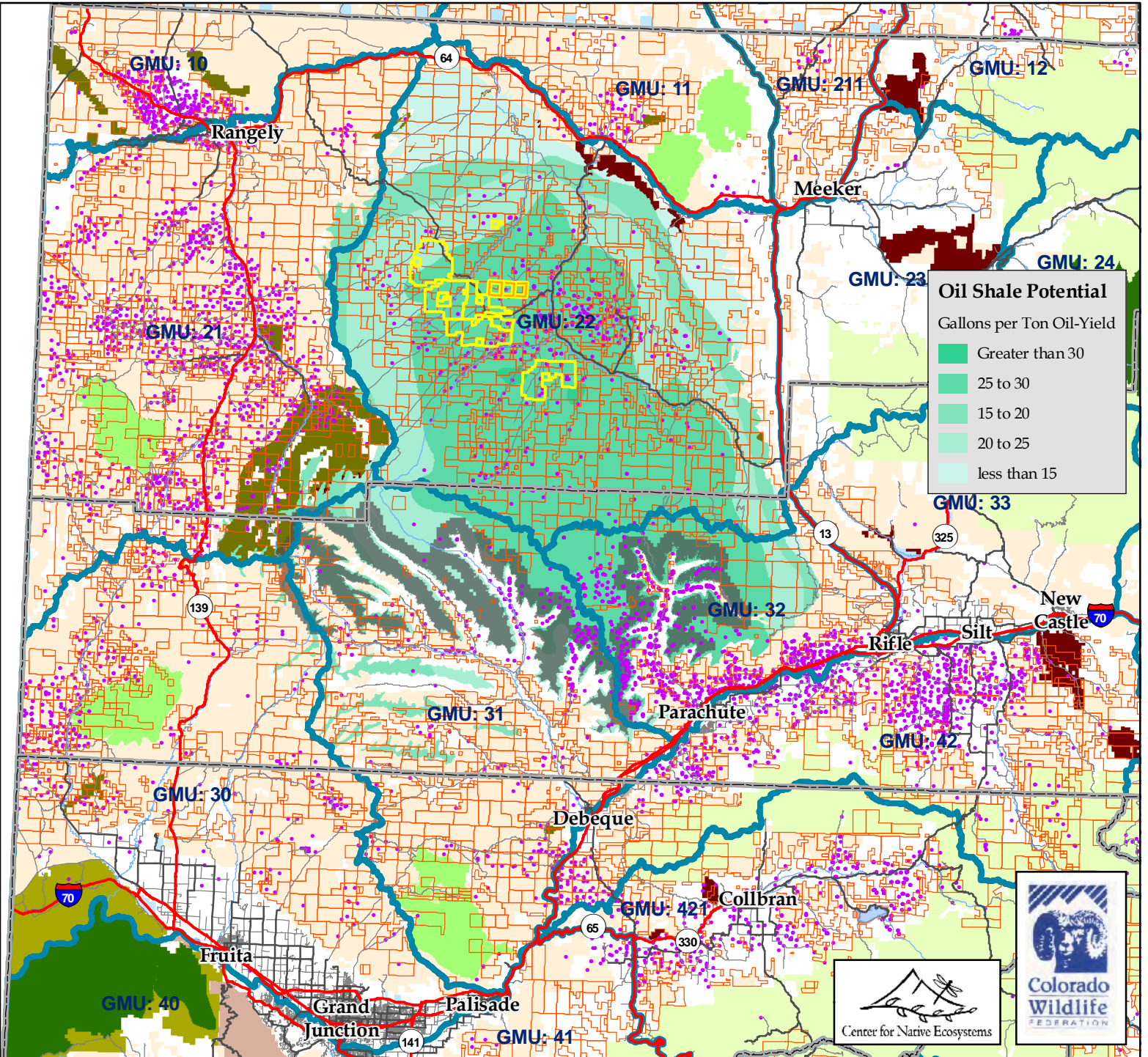
Legend

-  Latest Oil Shale RD&D Leases
-  Oil Shale RD&D Leases
-  County
-  Highway
-  Major Road
-  Game Management Unit
-  Lake
-  River
-  Oil and Gas Leases
-  Oil and Gas Wells
-  COGCC Roan Rim Buffer
-  Wilderness
-  National Conservation Area
-  Wilderness Study Area
-  Area of Critical Env. Concern
-  Forest Service Roadless
-  State Wildlife Area
- Land Ownership**
-  Private
-  USFS
-  BLM
-  Other Federal
-  State/Local/Other

0 5 10 15 Miles





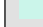


Map Notes: Wilderness Study Areas and Areas of Critical Environmental Concern are designated and managed by the Bureau of Land Management. Forest service roadless areas include 2001 roadless rule and 2008 Colorado rule areas. COGCC Roan Rim Buffer is an Area of Concern with development restrictions. Oil and gas leases from BLM Geocommunicator 8/3/2009. Oil and gas wells (including facilities) from COGCC 8/4/2009. Oil shale potential from 1978 USGS Pitman and Johnson Study.
Data sources: CDOW, CDOT, BLM, COMaP v 7, SRCA, COGCC. Connor Bailey CNE 2010



Oil Shale Potential

Gallons per Ton Oil-Yield

-  Greater than 30
-  25 to 30
-  15 to 20
-  20 to 25
-  less than 15

